

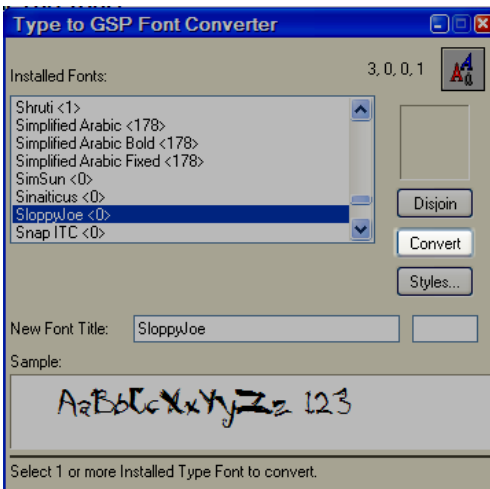
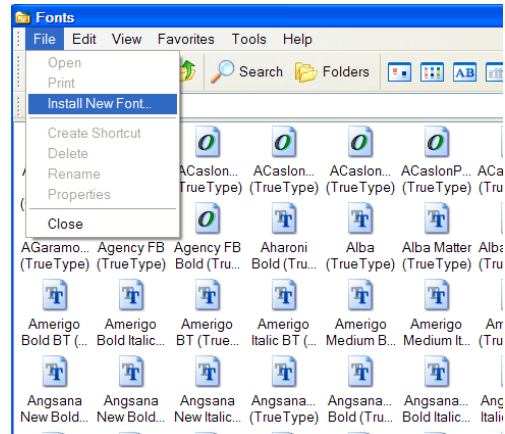
DencoSales Technical Services Tech Notes.

Where to get the font?

- Google the name of the font you are looking for along with "True Type Font"
- Save it to a known location

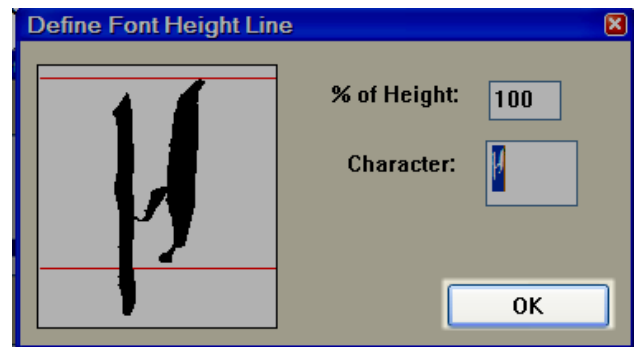
Install in windows properly - don't just drag it into the fonts folder, follow the steps below

- Open fonts folder (control Panel>fonts Folder)
- File>Install new font
- Point the dialog box to the saved ttf file
- Select the font(s)
- Click OK to install the font



Convert to a Gerber Font

- Open the TT Font Converter (Start>Programs>GSP Omega>TT font Converter)
- Select the font that you just installed
- Click Convert
- Click OK - accept the defaults
- Close the TTFont converter



Open Composer and your new font will be in the font list.

Depending on your system, having too many fonts (Windows or Gerber fonts) can slow down your system. Don't go wild and install every font you think you might ever need.

