

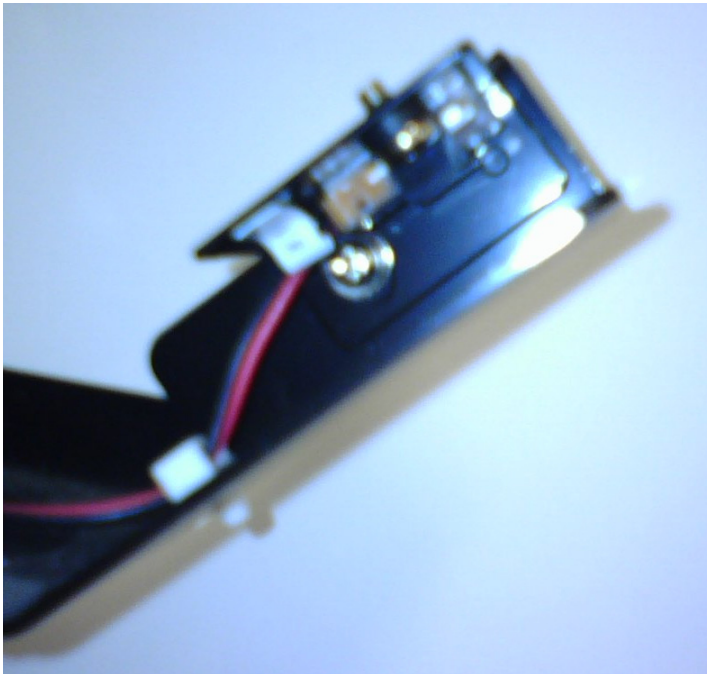
# ©DencoSalesTechnicalServices Tech Notes.

## HP9000 Take Up Reel Not Working?

I've had to help a couple of customers out with this (plus my demo unit). If your take up reel seems to stop working, check the obvious first - the switch, the cable connections and if all is as it should be there check out the bottom sensor of the take up sensor assembly shown here in a blurry picture taken with my cell phone.



If you get down and look underneath, you'll see that the actual sensor is attached to the bracket with one screw and a dimple that is supposed to be lined up with a hole on the bracket itself. (Again shown in blurry detail from my cell phone camera, below) In all three cases that I've seen, the dimple comes out of the hole on the bracket and the



bottom sensor is no longer aligned with (or aimed at) the top sensor. Simply twist the sensor plate till it "clicks" into place and the take up reel should start turning when you break the beam again. If the bracket doesn't twist easily, you may have to loosen the screw to make the adjustment.

Feel free to call if you have any questions.